

LINEAR TRUNK LIGHT 30W-60W

A state of the trunking system design offering a professional-looking solution for a variety of commercial and retail environments. Our Linear Trunk Light offers a wide variety of light distribution types for the perfect fit in any application. The trunking system design makes for easy install, with options to separate multiple circuits within the same run of lights.



FEATURES

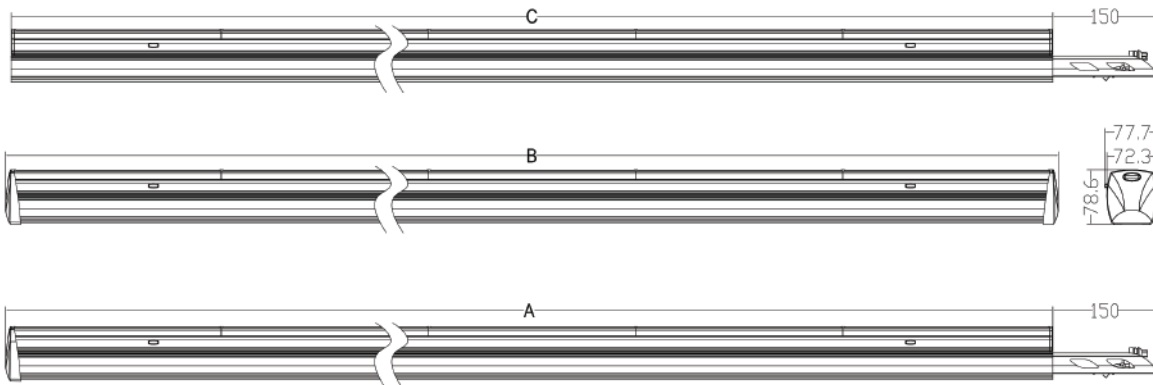
- Multiple light distribution options, maximizing effective light output.
- High Lumen Efficacy.
- Quick and Easy linkable trunking rail system.
- Trunking rail system provides option to connect multiple circuits for night light or emergency circuits.
- Life span of more than 50,000 hours.
- Dimming to 10%
- Available in 30W, 40W and 60W.
- High-efficiency current driver.
- Saves up to 60% energy consumption compared to traditional lighting.

GWL NOVUS

Product Parameters

MODEL	WATTS	INPUT VOLTAGE	LUMINOUS FLUX	CCT	CRI	BEAM ANGLE	WARRANTY	WORKING TEMP	MATERIAL
GWL-LTL-04-30-120V-XX-XX-D	30W	AC 100-277V	≥4800lm	3500K 4000K 5000K	≥90	30° 60° 90° 120° Double Asymmetrical Left Asymmetrical Right Asymmetrical Diffuse	5 years	-20° -40° C	Steel & PC
GWL-LTL-04-40-120V-XX-XX-D	40W		≥6400lm						
GWL-LTL-04-60-120V-XX-XX-D	60W		≥9600lm						

Product Dimensions



A(mm)	B(mm)	C(mm)
1209.7	1217.7	1201.7

Product Order Code

GWL	PF	PF	XX	PF	XX	XX	D
GWL	PRODUCT SERIES LTL - Linear Trunk Light	SIZE 04 - 4FT	WATTAGE 30 - 30 watt 40 - 40 watt 60 - 60 watt	INPUT VOLTAGE 120V - AC 100-277V	CCT 35K - 3000K 40K - 4000K 50K - 5000K	BEAM ANGLE SP - 30 Degree NR - 60 Degree WD - 90 Degree FD - 120 Degree LS - Left Asymmetrical RS - Right Asymmetrical DS - Double Asymmetrical FF - Diffuse	DIMMABLE

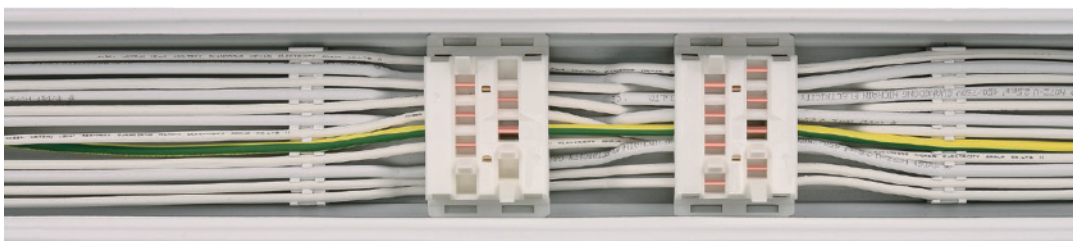


Trunking Rail



NORMAL TRUNKING RAIL
GWL-LTL-4-NTR-8W

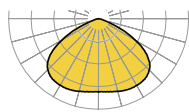
END TRUNKING RAIL
GWL-LTL-4-ETR-8W



8-WIRE TRUNKING RAIL

- 1 - Constant Hot
- 2 - Switched Line 1
- 3 - Neutral
- 4 - Switched Line 2
- 5 - Ground
- 6 - Switched Line 3
- 7 - Dim +
- 8 - Dim -

Optics



VERY WIDE
FD-120 Degrees



WIDE
WD-90 Degrees



NARROW
NR-60 Degrees



VERY NARROW
SP-30 Degrees



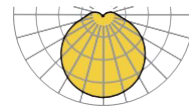
ASYMETRIC LEFT
LS- Asymetric Left



ASYMETRIC RIGHT
RS- Asymetric Right

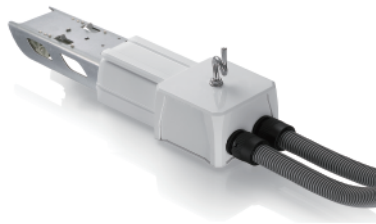


DOUBLE ASYMETRIC
DS- Double Asymetric

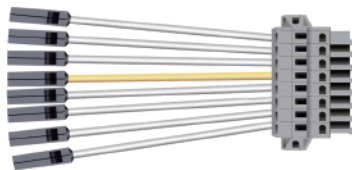


DIFFUSE
FF- Diffuse

Accessories



FEED IN BOX
GWL-LTL-FIB-8W



FEED IN CONNECTOR
GWL-LTL-FIC-8W



BLANK COVER
GWL-LTL-BC



SUSPENSION CORD (3M)
GWL-LTL-SC-3M



T-BAR CLIP
GWL-LTL-MC-TB



SURFACE MOUNT CLIP
GWL-LTL-MC-SM



END CAP
GWL-LTL-EC

GWL NOVUS



Housing Colours



WHITE - RAL 9016



BLACK - RAL 9017